



### Technical Data Sheet

### IsoRaft LPDR - Low Profile Deck Raft

**SKU:** LPDR2(3,4)

**Dimensions (LxWxH):** 1-7/8" (2-7/8, 3-7/8) x 4-7/8" x 1-1/2"

**Product Description:** Constructed with birch plywood from sustainably managed forests, and a specially formulated, pure black silicone compound with patented Vi-Bridge Technology, IsoRafts are designed to take up less space, provide superior sound isolation, last for 100+ years (unlike other sound isolation compounds that will break down in 15 years), and cost less per STC/IIC point than any other sound isolating device on the market. IsoRafts are the only decoupling device that work with wood furring, eliminates the need for high cost assemblies like gypcrete, double/staggered walls, MLV, Green Glue, resilient channel and underlayment (and other similar products) and produces superior sound isolation, especially at lower frequencies.

**STC & IIC Rating (with proper installation):** Adds 13-21 STC Points and 14-18 IIC Points depending on Floor/Ceiling Assembly.

**Projection From Supporting Structure:** Deck Raft Low Profile has a 1.5" high profile.

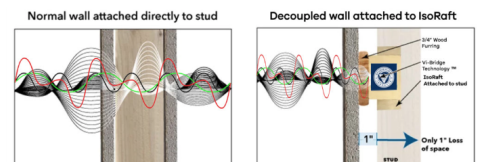
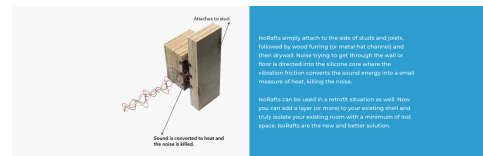
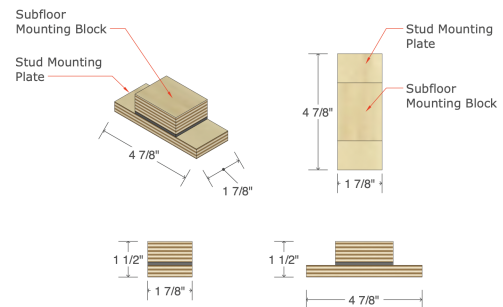
**Intended Use:** For controlling the movement of sound and vibrations through floor and ceiling assemblies, and associated components, producing superior STC and IIC ratings.

**Dead or Shear Load Max:** 300 lbs. Max Per IsoRaft LPDR Deck Raft LPDR2(3,4).

**Deflection:** 1.5mm max shear; 1mm max tension.

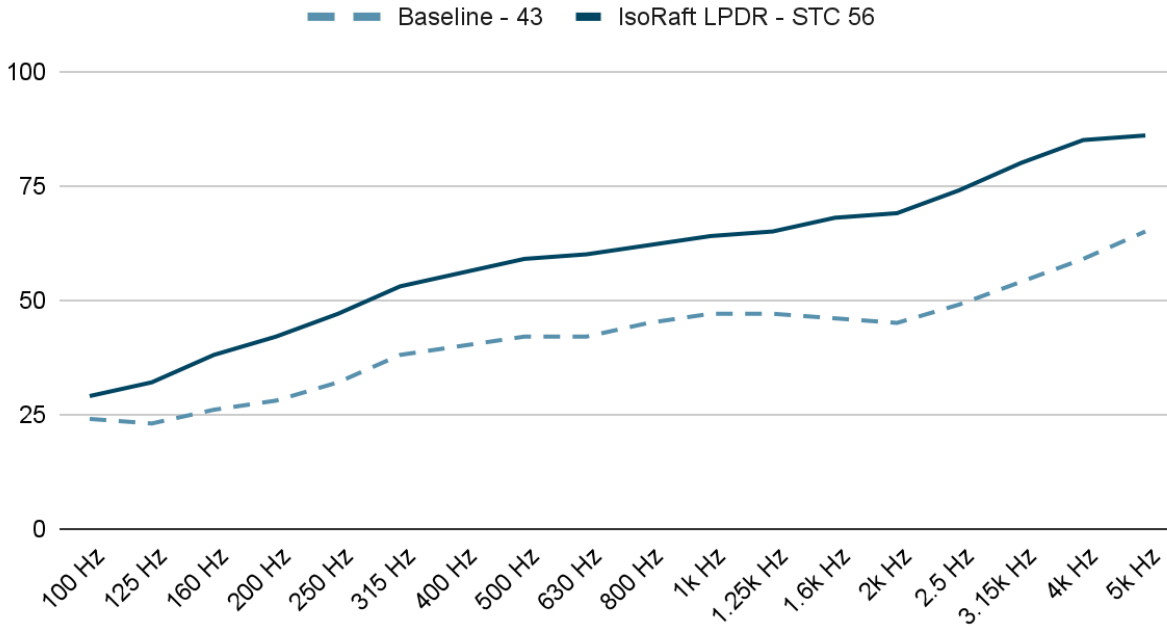
**Acoustic Testing:** All acoustic testing is in compliance with ASTM E90 & ASTM E413 Standards.

**UL Classified One Hour Fire Resistance Rated Design:** UL-565, UL-M548, UL-U311, UL-340, UL-U344, UL-W307, UL-W473. The only UL one-hour fire-rated floor/ceiling assembly that allows wood furring.



## Riverbank Acoustical Laboratories - Independent Testing

### IsoRaft LPDR Lab Test - STC (Sound Transmission Class)



**Baseline Lab Test Assembly:**

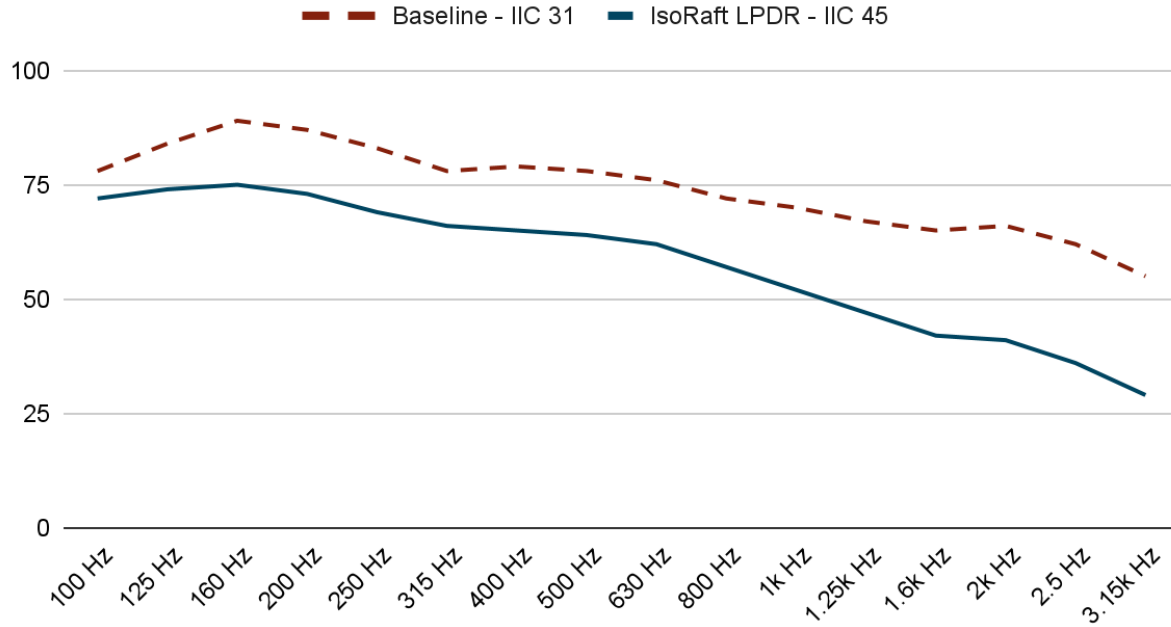
- 3/4" plywood sheathing
- 12 in. Open-Web Flat Wood Truss Floor
- R-19 insulation
- 5/8" Type X Gypsum

**IsoRaft WC Lab Test Assembly:**

- 2 layers 3/4" plywood
- StudioFloat Deck Rafts 24 in. o.c.
- R-6.7 insulation
- 3/4" plywood sheathing
- 12 in. Open-Web Flat Wood Truss Floor
- R-19 insulation
- 5/8" Type X Gypsum applied directly to bottom cords

## Riverbank Acoustical Laboratories - Independent Testing

### IsoRaft LPDR Lab Test - IIC (Impact Insulation Class)



**Baseline Lab Test Assembly:**

- 3/4" plywood sheathing
- 12 in. Open-Web Flat Wood Truss Floor
- R-19 insulation
- 5/8" Type X Gypsum

**IsoRaft WC Lab Test Assembly:**

- 2 layers 3/4" plywood
- StudioFloat Deck Rafts 24 in. o.c.
- R-6.7 insulation
- 3/4" plywood sheathing
- 12 in. Open-Web Flat Wood Truss Floor
- R-19 insulation
- 5/8" Type X Gypsum applied directly to bottom cords



## Wood Floor Assemblies

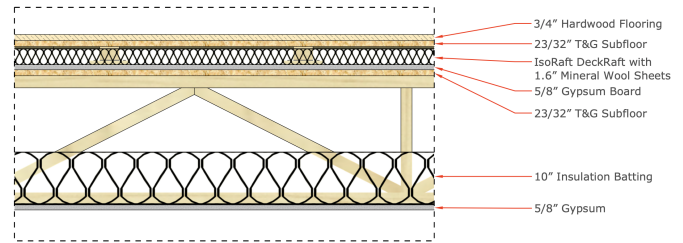
### IsoRaft Decoupled Floor with 5/8" Gypsum Ceiling

Floor/Ceiling Assembly STC Rating: 70 STC\*

Floor/Ceiling Assembly IIC Rating: 68 IIC\*

Floor/Ceiling Thickness (less truss): 5"

- 3/4" Hardwood Flooring
- 23/32" T&G Subfloor
- IsoRaft DeckRaft 2300
- 2" 1.6# Mineral Wool Sheets
- 5/8" Gypsum
- 23/32" T&G Subfloor
- Floor Truss
- 5/8" Gypsum



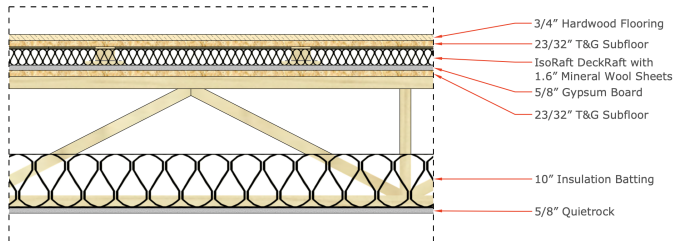
### IsoRaft Decoupled Floor with 5/8" Quietrock Ceiling

Floor/Ceiling Assembly STC Rating: 75 STC\*

Floor/Ceiling Assembly IIC Rating: 73 IIC\*

Floor/Ceiling Thickness (less truss): 5"

- 3/4" Hardwood Flooring
- 23/32" T&G Subfloor
- IsoRaft DeckRaft 2300
- 2" 1.6# Mineral Wool Sheets
- 5/8" Gypsum
- 23/32" T&G Subfloor
- Floor Truss
- 5/8" Quietrock



### IsoRaft Decoupled Floor with 5/8" Quietrock Ceiling

Floor/Ceiling Assembly STC Rating: 85 STC\*

Floor/Ceiling Assembly IIC Rating: 82 IIC\*

Floor/Ceiling Thickness (less truss): 6.4375"

- 3/4" Hardwood Flooring
- 23/32" T&G Subfloor
- IsoRaft DeckRaft 2300
- 2" 1.6# Mineral Wool Sheets
- 5/8" Gypsum
- 23/32" T&G Subfloor
- Floor Truss
- IsoRaft WC with 1x3 Furring Strip
- 7/16" OSB Sheathing
- 5/8" Quietrock

