



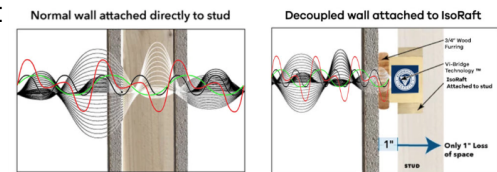
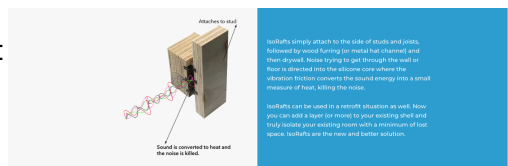
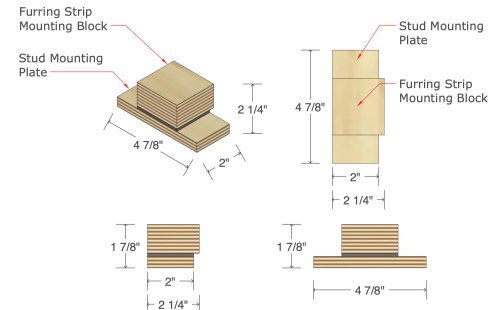
Technical Data Sheet

IsoRaft WC - Standard Profile Wall/Ceiling Raft

SKU: SPWCR

Dimensions (LxWxH): 2-1/4" x 4-7/8" x 2-1/4"

Product Description: Constructed with birch plywood from sustainably managed forests, and a specially formulated, 100% pure black silicone compound with Vi-Bridge Technology, IsoRafts are designed to take up less space, provide superior sound isolation, last for 100+ years (unlike other sound isolation compounds that will break down in 15 years), and cost less per STC/IIC point than any other sound isolating device on the market. IsoRafts are the only decoupling device that work with wood furring, eliminates the need for high cost assemblies like gypcrete, double/staggered walls, MLV, Green Glue, resilient channel and underlayment (and other similar products) and produces superior sound isolation, especially at lower frequencies.



STC & IIC Rating (with proper installation): Adds 14-21 STC and 14-18 IIC Points depending on Wall or Ceiling Assembly.

Projection From Supporting Structure: Only 1 inch when 3/4" furring strips are used.

Intended Use: For controlling the movement of sound and vibrations through wall and ceiling assemblies, and associated components, producing superior STC and IIC ratings.

Dead or Shear Load Max: 75 lbs. Max Per IsoRaft WC.

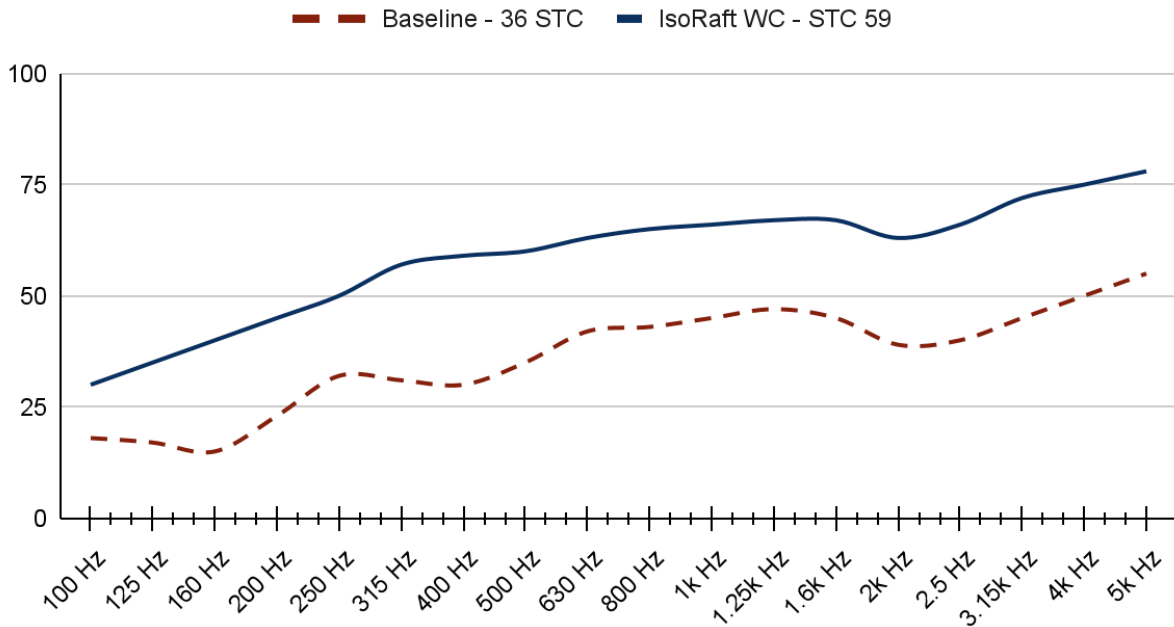
Deflection: 1.5mm max shear; 1mm max tension.

Acoustic Testing: All acoustic testing is in compliance with ASTM E90 & ASTM E413 Standards.

UL Classified One Hour Fire Resistance Rated Design: UL-565, UL-M548, UL-U311, UL-340, UL-U344, UL-W307, UL-W473. The only UL one-hour fire-rated floor/ceiling assembly that allows wood furring.

Riverbank Acoustical Laboratories - Independent Testing

IsoRaft WC Lab Test - STC (Sound Transmission Class)



Baseline Lab Test Assembly:

- 2 x 6 Wood Stud Wall 16 in. o.c.
- R-19 insulation
- 1 layer 5/8 in. Type X on each side

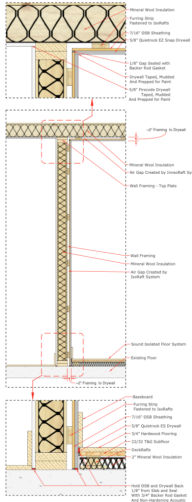
IsoRaft WC Lab Test Assembly:

- 2 x 6 Wood Stud Wall 16 in. o.c.
- R-19 insulation
- 1x3 wood furring strips on StudioFloat IsoRafts 16 in. x 24 in. o.c.
- 5/8 in. Type X - 1/2 in. OSB - 5/8 in. Type X sandwich on source side
- 1 layer 5/8 in. Type X on receive side



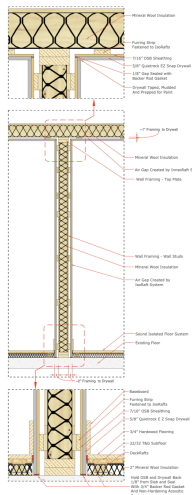
Recommended Wood Wall & Ceiling Assemblies

Standard Gypsum with IsoRaft Decoupled Wall vs Staggered Studs



- Wall Assembly STC Rating: 65 STC
 - Total Wall Thickness: 6.1875"
 - Replaces Staggered Stud Wall with Insulation and 5/8" Gypsum on One Side and Two Layers of 5/8" Gypsum on Opposing Side (7.375" Thick with STC of 45)
 - Estimated *-\$1.03/sqft* Materials and Labor Cost Savings using IsoRaft Wall Assembly over Staggered Stud Wall Construction
- *5/8" Gypsum*
 - *2x4 wood studs @ 16"oc with 3.5" unfaced insulation batting*
 - *IsoRaft WC SPWCR rafts at 24"oc grid spacing with 1x3 Furring Strip*
 - *7/16" OSB sheathing (sealed with backer rod)*
 - *5/8" Sound Isolation Drywall (Quietrock EZ Snap or similar)*

Double IsoRaft Decoupled Wall vs Double Framed Wall



- Wall Assembly STC Rating: 85 STC
 - Total Wall Thickness: 7.625"
 - Replaces Double Stud Wall with Double Insulation, One Layer of 5/8" Gypsum on Both Side, and One Layers of 5/8" Quietrock on Both Side (10.5" Thick with STC of 65)
 - Estimated *-\$0.59/sqft* Materials and Labor Cost Savings vs Double Wall Construction
- *5/8" Sound Isolation Drywall (Quietrock EZ Snap or similar)*
 - *7/16" OSB sheathing (sealed with backer rod)*
 - *IsoRaft WC SPWCR rafts at 24"oc grid spacing with 1x3 Furring Strip*
 - *2x4 wood studs @ 16"oc with 3.5" unfaced insulation batting*
 - *IsoRaft WC SPWCR rafts at 24"oc grid spacing with 1x3 Furring Strip*
 - *7/16" OSB sheathing (sealed with backer rod)*
 - *5/8" Sound Isolation Drywall (Quietrock EZ Snap or similar)*

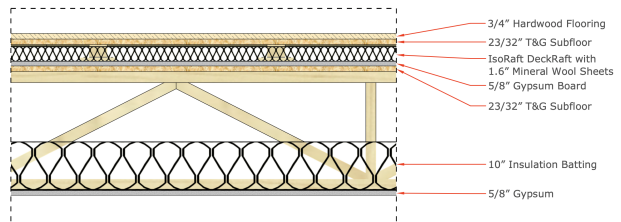


Recommended Wood Floor and Ceiling Assemblies

IsoRaft Decoupled Floor with 5/8" Gypsum Ceiling

Floor/Ceiling Assembly STC Rating: 70 STC
 Floor/Ceiling Assembly IIC Rating: 68 IIC
 Floor/Ceiling Thickness (less truss): 5"

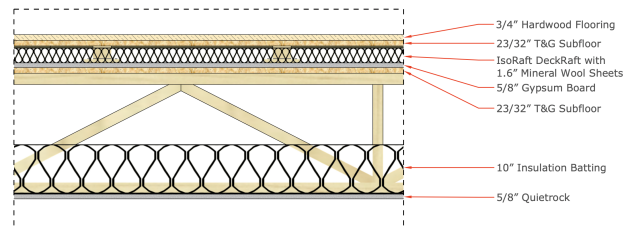
- 3/4" Hardwood Flooring
- 23/32" T&G Subfloor
- IsoRaft LPDR DeckRaft with 1.6# Mineral Wool Sheets
- 5/8" Gypsum
- 23/32" T&G Subfloor
- Floor Truss
- 5/8" Gypsum



IsoRaft Decoupled Floor with 5/8" Quietrock Ceiling

Floor/Ceiling Assembly STC Rating: 75 STC
 Floor/Ceiling Assembly IIC Rating: 73 IIC
 Floor/Ceiling Thickness (less truss): 5"

- 3/4" Hardwood Flooring
- 23/32" T&G Subfloor
- IsoRaft LPDR DeckRaft with 1.6# Mineral Wool Sheets
- 5/8" Gypsum
- 23/32" T&G Subfloor
- Floor Truss
- 5/8" Quietrock



IsoRaft Decoupled Floor with 5/8" Quietrock Ceiling

Floor/Ceiling Assembly STC Rating: 85 STC
 Floor/Ceiling Assembly IIC Rating: 82 IIC
 Floor/Ceiling Thickness (less truss): 6.4375"

- 3/4" Hardwood Flooring
- 23/32" T&G Subfloor
- IsoRaft LPDR DeckRaft with 1.6# Mineral Wool Sheets
- 5/8" Gypsum
- 23/32" T&G Subfloor
- Floor Truss
- IsoRaft WC SPWCR with 1x3 Furring Strip
- 7/16" OSB Sheathing
- 5/8" Quietrock

